

Hello everyone,

It has been a busy two weeks since we returned from the half term break! Three Year 4 pupils represented Lake Farm at the Spelling Bee competition at Godolphin academy on Wednesday and they were absolutely amazing. Well done to Ayra, Kivanc and Shaima for their diligence and commitment in preparing for the competition with 25 other pupil representatives from across the Federation of ten academies. Shaima won the Spelling Bee for Lake Farm! She brought the trophy back to the academy for the second year—Congratulations Shaima! We are very proud of your achievement.

TTRS (Times Tables Rock Stars) England Rocks 2025 competition starts next week on the 18th to 20th November from 7.30 am to 7.30 pm daily. Our Maths Lead, Mr McElwee would like to encourage all students from Years 1 to 6 to take part in this competition next week. Lake Farm students aim high and achieve amazing outcomes in this annual nationwide competition. Previous years' outcomes were:

2024—26th in England out of almost 4500 schools! 2nd Primary school in London! 1st in The Park Academy Federation!

2023—9th in England out of almost 4500 schools! 2nd Primary school in London! 1st in The Park Academy Federation!

2022—6th in England out of almost 3580 schools! 1st Primary school in London! 1st in The Park Academy Federation!

With our strong parent partnership, I hope to report amazing results of the England Rocks 2025 competition in the next newsletter.

This year the elections for Head Boy/Girl and their deputies are being held later to coincide with UK Parliament Week (24th-30th November 2025). Years 5 and 6 students have handed in their applications, SLT have shortlisted the expressions of interest and the finalists have been informed! Well done to all the applicants—an impressive group of highly able and ambitious students! Next two weeks you will see these finalists campaigning in the playgrounds after school; and all pupils and parents will have the opportunity to cast their votes very soon—Voting/Polling Day will be on the 28th of November. How exciting!

As the weather is getting colder, please can we make sure that all our students wear their coats, school jumpers, school blazers, hats, scarves and gloves to keep themselves warm in the outdoors. This would help children to keep warm and protect them from illness.

WARM REGARDS - MSH BUTTAR

ENGLAND ROCKS

18TH TO 20TH NOVEMBER
7:30AM TO 7:30PM DAILY

PLAY IN ANY
GAME TYPE!

1HR TIME LIMIT
PER PERSON!

WINNING CLASS WILL HAVE THE
HIGHEST NUMBER OF CORRECT
ANSWERS PER STUDENT!

TIMES TABLES
ROCK STARS

- Years 2 - 6 can do 30 minutes per Maths lesson - *Tuesday, Wednesday, Thursday* next week
- Can be done during soft start/after lunch
- Finished 26th in England last year; 2nd in London

2024 TTRS 'England Rocks' competition: the results

2nd in London!

LFPA enjoyed another memorable competition!

- 2nd in all of Greater London
- 26th in England – out of 4,500 schools

Prizes & Certificates will be handed out in *Monday's assembly for top rockers!*

LAKE FARM PARK ACADEMY
CLASS LEADERBOARD

Ranked by class total score

Showing all 30,182 class results

	Class Total Score
1 Zaha Hadid 24-25 Lake Farm Park Academy	77,899
2 Renzo Piano 24-25 Lake Farm Park Academy	67,754
3 Archimedes Lake Farm Park Academy	47,485
4 Marie Curie 24-25 Lake Farm Park Academy	44,349
5 Katherine Johnson 24-25 Lake Farm Park Academy	39,623
6 Charles Darwin 24-25 Lake Farm Park Academy	29,757

Important information

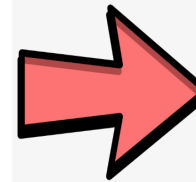
Stay and Read

Stay and Read in Years Reception, Years 1 & 2 is on Mondays, Wednesdays and Fridays from 8.45am to 8.55pm.



Events :

- 24th November 2025—Individual photos
- 28th November 2025—Year 4 trip to Windsor Castle
- 5th December 2025—Non uniform day in exchange for chocolates to sell at Christmas Fair
- 8th December 2025—Whole school Panto show
- 10th December 2025—Breakfast with Santa for Reception and Key Stage 1
- 11th December 2025 and 12th December 2025—Nativity for Reception and Key Stage 1
- 12th December 2025—Non uniform day in exchange for cakes to sell at Christmas Fair
- 15th December 2025—Nursery Christmas Party
- 16th December 2025—Nursery Christmas show
- 16th December 2025—Christmas Fair
- 17th December 2025—Christmas Menu
- 17th December 2025—Class parties
- 18th December 2025—Nursery Messy Play from 9:15am to 10:30am



Dates for
your
diary.....

Class Assemblies at 2:45pm in the Main Hall

- Friday 21st December 2025—Year 5—Archimedes
- Friday 5th December 2025 —Year 4—Marie Curie
- Friday 16th January 2026 —Year 4—Nikola Tesla
- Friday 23rd January 2026—Year 4—Charles Darwin

Coffee Morning

- Friday 21st November 2025 —Focus will be Reading
- Friday 28th November— Focus will be SEND



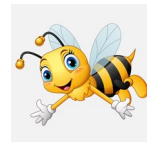
Winners of the Spelling Bee competition



Congratulations to Shaima for Winning the 2024 Spelling Bee Competition

We are delighted to announce and formally congratulate Shaima on her outstanding victory in the annual Spelling Bee Competition.

Well done to Ayra and Kivanc for taking part and all their hard work



Special Menu

Christmas

Wednesday 17th December

Roast Turkey with Sage & Onion Stuffing

Halal Roast Turkey with Sage & Onion Stuffing

Vegan Cranberry & Roasted Vegetable Wellington

Served with Roasted Potatoes,
Brussel Sprouts, Peas, Carrots & Gravy

Dessert

Gingerbread Brownie

BM3HalalNon Lake Farm

pabulum mm
HONESTLY GOOD FOOD

Picture Day



Individual School Photographs - Monday, November 24, 2025

Dear Parents/Guardians,

Please note that individual and siblings photographs will be taken on **Monday, November 24, 2025**.



Uniform: Please ensure your child attends school on this day in **full, correct school uniform**. We appreciate your cooperation in maintaining our presentation standards for these official photographs.

Consent: Please confirm that you have provided the necessary photographic **consent** for your child via the usual school channels. Only students with valid consent on file will be photographed.

Should you have any questions or require further clarification regarding the photo session or consent forms, please contact the **School Office** at your earliest convenience.

Lake Farm Park Academy Uniform



WHOLE SCHOOL ATTENDANCE

Top Attendance for the Week commencing 20/10/2025

	Week Commencing 20/10/2025	%	Learning hours Lost
1	Year 6: Zaha Hadid	96.9%	37
2	Year 5: Katherine Johnson	95.6%	37
2	Year 3: Maya Angelou	95.3%	47.5
3	Year 5: Maryam Mirzakhani	94.7%	55
3	Year 4: Nikola Telsa	94.2%	55
3	Reception: Ladybird Class	94.1%	55
4	Year 1: Mole Class	93.9%	65
4	Year 2: Otter	93.0%	65
5	Reception: Grasshopper Class	92.7%	75
5	Year 3: Cressida Cowell	92.1%	75
6	Year 2: Badger	91.4%	85
6	Year 6: Norman Foster	91.3%	85
7	Year 3: Charles Dickens	90.9%	95
8	Year 1: Rabbit Class	89.0%	105
8	Year 6: Renzo Piano	88.6%	115
8	Year 1: Squirrel Class	88.5%	115
9	Year 5: Archimedes	87.6%	125
9	Year 4: Marie Curie	87.3%	125
10	Reception: Butterfly Class	86.7%	135
11	Year 4: Charles Darwin	81.9%	180
12	Year 2: Fox	80.5%	190

Top Attendance for the Week commencing 03/11/2025

	Week Commencing 03/11/2025	%	Learning hours Lost
1	Year 3: Maya Angelou	99.1%	10
2	Year 1: Mole Class	98.5%	20
2	Year 6: Zaha Hadid	98.0%	20
3	Year 2: Badger	97.6%	30
4	Year 3: Charles Dickens	96.4%	37
4	Year 4: Marie Curie	96.3%	37
5	Reception: Ladybird Class	95.9%	47.5
5	Reception: Butterfly Class	95.8%	47.5
5	Year 5: Katherine Johnson	95.2%	47.5
5	Year 4: Nikola Tesla	95.1%	47.5
6	Year 1: Squirrel Class	94.9%	55
6	Year 2: Fox	94.8%	55
6	Year 4: Charles Darwin	94.4%	55
6	Year 2: Otter	94.2%	55
7	Year 6: Norman Foster	93.9%	65
7	Year 6: Renzo Piano	93.9%	65
8	Reception: Grasshopper Class	92.8%	75
8	Year 1: Rabbit Class	92.5%	75
8	Year 5: Maryam Mirzakhani	92.3%	75
9	Year 3: Cressida Cowell	90.3%	95
10	Year 5: Archimedes	85.0%	142

Attendance Reminders

Lake Farm Park Academy has high expectations for every student from the moment they join our school. Children have the right to a high quality education and we provide this at Lake Farm Park Academy. High attendance is necessary to ensure that your child benefits fully from the learning opportunities on offer and to ensure they leave school having developed positive lifelong habits and as well rounded individuals.

Medical Appointments

Appointments, where possible, should be made outside of school hours or in the holiday period. This includes routine dental appointments. If this is unavoidable, your child should still attend school before or after the appointment where possible. Any session missed that was deemed reasonable to attend will be marked as unauthorised leave.

Absence Requests

Absence requests will only be considered for exceptional circumstances and these are dealt with on an individual basis.

What to do if your child cannot attend school:

Absence must be reported on a daily basis. You must contact the school (**before 9.00am**) on the first day of absence. This can be done by emailing

lfpaoffice@theparkfederation.org or by calling the school number 02085732622 option 1. Please leave the Child's name, class and the reason why they cannot attend school. If they are ill, please give a clear explanation of their condition. **For a prolonged absence due to illness, medical evidence will be requested.** This can be in the form of a prescription, medical paperwork or an appointment card/letter.



Lake Farm Park Academy

Learning, Achieving, Aspiring Together

PUNCTUALITY

How does this affect children?

If your child arrives late in school, he / she misses the teacher's instructions and the introduction to the lesson. They also disturb the learning of other students as the teacher has to acknowledge the lateness and go through the lesson with the child. Did you know how much learning children might miss out due to lateness?

Minutes late per day during school year	Equal days of teaching lost in a year
5 minutes	3.4 days
10 minutes	6.9 days
15 minutes	10.3 days
20 minutes	13.8 days
30 minutes	20.7 days

What can we do to help?

Ensure your child arrives on time. Children are able to come onto the school grounds at 8:30am or book them in the breakfast club through Get Active

Prepare for school the night before, including your book bag, lunch and uniform etc.

Punctuality is important for children to start the day well but also a good habit for life. If you need support or advice about punctuality please contact Mrs. Woodley or email

lfpaoffice@theparkfederation.org