

Hello everyone,

As part of our commitment to make maths exciting and high profile in our school, we are taking part in the friendly competition involving schools in England, TTRS England Rocks! The competition usually runs in the second week of November, we will announce this soon. It's all done online via [www.play.trockstars.com](http://www.play.trockstars.com)

Children can play in any gamemode with every correct answer to a multiplication or division question, earning themselves, their class and the school a point. The Times Tables Rock Stars platform will calculate the class average (the number of correct answers per pupil in the class who play during the competition hours, subject to a daily 60-minute limit. Winning classes in the school and in the competition as a whole will be the ones with the highest average.

To support player wellbeing, there is a daily time limit of 60-minutes per player. Once the player goes beyond 60-minutes of play on that day, they will still earn coins but will no longer earn points towards the competition.

During the last few years, we have attained significant positions out of over a thousand schools. Our pupils made huge progress in the competition last year in November 2024 and achieved the following results:

**26th in England out of almost 4500 schools! 2nd Primary school in 629 London schools!**

**1st in The Park Academy Federation!**

Over the next few weeks, there are a multitude of events taking place—Guy Fawkes Night (Bonfire Night) and Diwali festivities will be celebrated. We wish everyone will have fun and safe celebrations. Fireworks will be used and therefore it is incredibly important that Fireworks Regulations are taken into consideration whilst celebrating.

I would like to wish all pupils and families the following—Happy Diwali! Happy Deepavali! Happy Bandi Chor Divas!

***WARM REGARDS MS H BUTTAR***

## Important information

### Events/Parents Workshops :

#### Stay and Read

Week beginning 15th September—Stay and Read in Years 1 & 2 commences on Mondays, Wednesdays and Fridays.

#### Events :

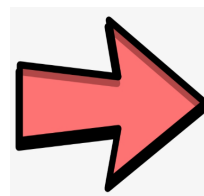
Half term holidays from the 27th October 2025 to 31st October 2025

Children return to school on the 3rd November 2025

African Drumming workshop for Year 1 to Year 5—10th November 2025

Odd Socks day—12th November 2025—children should wear uniform and wear odd socks on the day

Children in Need—14th November 2025—Individual Photo day—24th November 2025



Dates for  
your  
diary.....

#### Class Assemblies at 2:45pm in the Main Hall

Maryam Mirzakhani assembly on the 7th November 2025

Katherine Johnson assembly on the 14th November 2025



**Individual photo on Monday  
24<sup>th</sup> November 2025**

Stand Together Against Bullying  
**ODD SOCKS DAY ON THE  
12<sup>TH</sup> NOVEMBER 2025**

CHILDREN SHOULD COME TO SCHOOL IN THEIR UNIFORM  
AND ONLY WEAR ODD SOCKS TO SHOW SUPPORT



It's Odd Socks Day! ❤️💙💚💛❤️  
💜 A fantastic way to kick off  
Anti-Bullying Week by celebrating  
our individuality and respecting  
that we are all different. Let your  
feet do the talking – wear your  
wackiest, most wonderful  
mismatched socks with pride!

## Attendance Reminders

Lake Farm Park Academy has high expectations for every student from the moment they join our school. Children have the right to a high quality education and we provide this at Lake Farm Park Academy. High attendance is necessary to ensure that your child benefits fully from the learning opportunities on offer and to ensure they leave school having developed positive lifelong habits and as well rounded individuals.

## Medical Appointments

Appointments, where possible, should be made outside of school hours or in the holiday period. This includes routine dental appointments. If this is unavoidable, your child should still attend school before or after the appointment where possible. Any session missed that was deemed reasonable to attend will be marked as unauthorised leave.

## Absence Requests

Absence requests will only be considered for exceptional circumstances and these are dealt with on an individual basis.

### What to do if your child cannot attend school:

**Absence must be reported on a daily basis.** You must contact the school (**before 9.00am**) on the first day of absence. This can be done by emailing

lfpaoffice@theparkfederation.org or by calling the school number 02085732622 option 1. Please leave the Child's name, class and the reason why they cannot attend school. If they are ill, please give a clear explanation of their condition. **For a prolonged absence due to illness, medical evidence will be requested.** This can be in the form of a prescription, medical paperwork or an appointment card/letter.



# Lake Farm Park Academy

*Learning, Achieving, Aspiring Together*

## PUNCTUALITY

How does this affect children?

If your child arrives late in school, he / she misses the teacher's instructions and the introduction to the lesson. They also disturb the learning of other students as the teacher has to acknowledge the lateness and go through the lesson with the child. Did you know how much learning children might miss out due to lateness?

Minutes late per day during school year	Equal days of teaching lost in a year
5 minutes	3.4 days
10 minutes	6.9 days
15 minutes	10.3 days
20 minutes	13.8 days
30 minutes	20.7 days

What can we do to help?

Ensure your child arrives on time. Children are able to come onto the school grounds at 8:30am or book them in the breakfast club through Get Active

Prepare for school the night before, including your book bag, lunch and uniform etc.

Punctuality is important for children to start the day well but also a good habit for life. If you need support or advice about punctuality please contact Miss. Dickerson or email

lfpaoffice@theparkfederation.org

## WHOLE SCHOOL ATTENDANCE

### Top Attendance for the Week commencing 06/10/2025

	Week Commencing 06/10/2025	%	Learning hours Lost
1	Year 6: Zaha Hadid	98.4%	20
1	Year 4: Charles Darwin	98.3%	20
1	Year 3: Cressida Cowell	98.2%	20
1	Year 5: Katherine Johnson	98.1%	20
2	Year 1: Mole Class	97.7%	30
2	Year 6: Norman Foster	97.3%	30
3	Year 3: Charles Dickens	96.4%	37.5
3	Year 1: Squirrel Class	96.2%	37.5
3	Year 2: Badger	96.0%	37.5
4	Year 5: Maryam Mirzakhani	95.8%	47.5
4	Year 6: Renzo Piano	95.4%	47.5
4	Year 4: Marie Curie	95.0%	47.5
5	Year 2: Otter	94.7%	55
5	Year 4: Nikola Telsa	94.7%	55
6	Year 5: Archimedes	93.8%	65
6	Year 1: Rabbit Class	93.3%	65
7	Year 3: Maya Angelou	92.5%	75
7	Reception: Butterfly Class	92.4%	75
8	Year 2: Fox	91.3%	85
8	Reception: Ladybird Class	91.1%	85
9	Reception: Grasshopper Class	84.9%	152.5

### Top Attendance for the Week commencing 13/10/2025

	Week Commencing 13/10/2025	%	Learning hours
1	Year 3: Cressida Cowell	98.2%	20
2	Year 5: Katherine Johnson	97.8%	30
2	Year 6: Zaha Hadid	97.6%	30
2	Year 5: Archimedes	97.5%	30
2	Reception: Ladybird Class	97.4%	30
3	Year 2: Badger	96.4%	37.5
4	Year 3: Charles Dickens	95.6%	47.5
5	Year 1: Mole Class	95.5%	47.5
5	Year 2: Otter	95.1%	47.5
6	Year 4: Marie Curie	94.7%	55
6	Year 6: Renzo Piano	94.6%	55
7	Reception: Butterfly Class	93.5%	65
7	Year 5: Maryam Mirzakhani	93.5%	65
7	Reception: Grasshopper Class	93.2%	65
8	Year 2: Fox	91.7%	85
9	Year 6: Norman Foster	90.8%	95
10	Year 1: Squirrel Class	89.0%	105
10	Year 4: Charles Darwin	89.0%	105
11	Year 3: Maya Angelou	88.7%	115
12	Year 4: Nikola Telsa	76.9%	
12	Year 1: Rabbit Class	76.6%	

### Request to parents

We kindly request that all non-emergency dental and medical appointments be scheduled outside of school hours. This includes after 3:30 p.m., or during school holidays like half term.

Minimising disruption to learning is a top priority, and every lesson is valuable. By booking appointments during non-school hours, you help ensure your child doesn't miss im-

# UNIFORM

It is our school policy that all children wear school uniform when attending school, or when participating in a school -organized event outside normal school hours.

Our policy on school uniform is based on the motion that school uniform:

- Promotes a sense of pride in the school;
- Engenders a sense of community and belonging towards the school;
- Is practical and smart;
- Identifies the children within school;
- Prevents children from coming to school in fashion clothes that could be distracting the class;
- Makes children feel equal to their peers in terms of appearance;
- Is regarded as suitable wear for school and good value for money by most parents;
- Is designed with health and safety in mind

## General Uniform

- LFPA sweatshirt/cardigan or plain purple sweatshirt/cardigan
- LFPA Blazer (optional) Year 5 & Year 6 are encouraged to wear the blazer
- White LFPA T-shirt or plain white shirt/T-shirt/polo shirt/blouse
- Purple pinafore (purple and white checked) dress
- Black or grey trouser or skirt
- Black shoes
- Black or grey tights/black, white or grey socks
- No jewellery (except for stud earrings) or nail polish
- No decorative hair accessories
- Plain black; white or purple hijabs or Patkas

## PE Kit

- White LFPA T-shirt
- LFPA purple jumper or fleece - No hoodies
- Black shorts (no designer markings)
- Black jogging bottoms in cold weather (no designer markings)
- Black trainers/plimsolls
- **No earrings** should be worn on the days children have PE

***NB. Trousers and shorts worn in school for uniform must be appropriate uniform style material and 'cut' NOT sportswear or fashion styles. PE kits are to be worn to school on the days that your child/ren have PE.***

**Lake Farm Park Academy Uniform**



LAKE FARM PARK  
PE BAG

LAKE FARM PARK  
BOOK BAG



**PE KIT**



JOGGING  
BOTTOMS

SHADOW STRIPE  
SHORT

TRAINERS OR  
VELCRO  
PLIMSOLL

LAKE FARM  
FLEECE

LAKE FARM PARK  
T-SHIRT

<https://pmgschoolwear.co.uk/school/lakefarmparkacademy>

**HAVE YOUR SAY ON ACCESSING GP SERVICES**

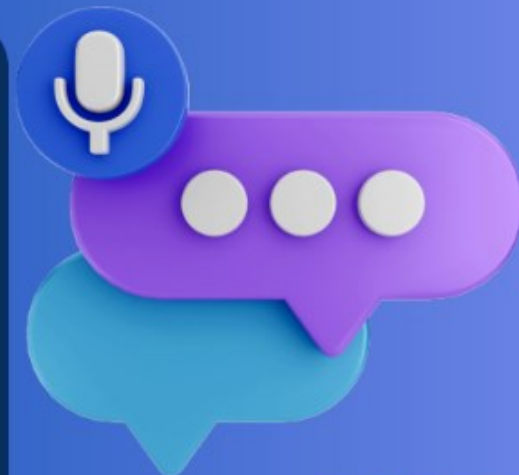
# **PATIENT ACCESS FEEDBACK SURVEY**

**With your help,  
we are reviewing access to GP services.  
Your feedback is invaluable.  
Please complete the survey and join us to have  
your say!**

**SCAN TO COMPLETE**



<https://linktr.ee/Community.Hillington>



**NHS**