

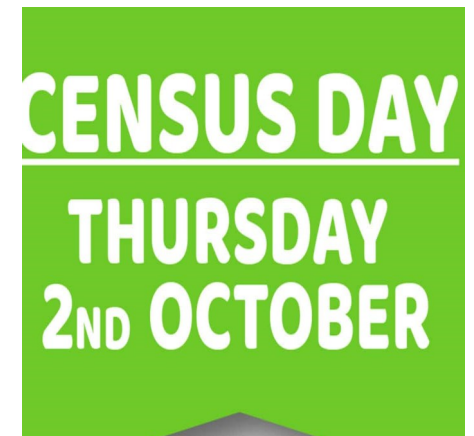
Hello everyone,

Lake Farm Park Academy always has high aspirations and we all believe in being the first at most things—for eg first academy in the Federation to be the top school in London Rocks! First academy in the Federation to have received a congratulatory letter from the State Minister of Schools for our outstanding achievements in the Multiplication Tables Check 2023! Only academy in the Federation to achieve 25 average point score (maximum point) in this year's Multiplication Tables Check!

**It's Census Day on Thursday, 2nd October! We have planned an exciting day for all pupils—a Special Menu for Lunch, Magic Show (gratitude to the PTA for funding this event) and non-uniform for all students!** The more pupils counted as being present on Thursday, 2nd October, the higher the resulting financial allocation will be for Lake Farm. This funding is important as it covers essential resources and programmes like employing teachers and support staff, purchasing resources and technology; school trips and SEN provision of students with additional needs. If students fail to be registered on Thursday, 2nd October, there would be significant financial shortfall that would impact on resource availability and the quality of education. Please ensure your child attends school on Thursday, 2nd October and your contribution directly helps the entire school and empowers the school to provide the best possible education for all!

Teachers at Lake Farm are very dedicated and committed to ensuring all children make progress in their learning. They organise interventions and boosters before and after school. Please ensure your child attends these sessions weekly as it helps them make progress. Also it is not fair on the teachers and other children who could have been given the allocated spaces. I would like to end this with a quote — ***When it comes to life the critical thing is whether you take things for granted or take them with gratitude*** (G.K. Chesterton, author)

**WARM REGARDS MSH BUTTAR**



## Important information

### Special days/week celebrated around the world :

World Space week—4th October 2025 to 10th October 2025

Dyslexia Awareness Week—6th October 2025 to 12th October 2025

World Mental Health Day—10th October 2025

### School events :

Special lunch menu—2nd October 2025

Flu Vaccine in school for Reception to Year 6—16th October 2025 & 12th November 2025

Wonders of the World—Culture day in Year 2—16th October 2025—Non uniform (only for year 2)

Half term holidays from the 27th October 2025 to 31st October 2025

### Events/Parents Workshops :

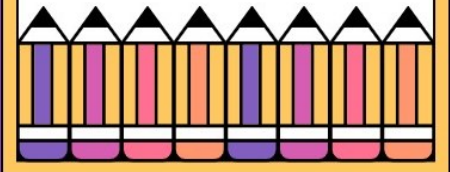
#### Stay and Read

Week beginning 15th September—Stay and Read in Years 1 & 2 commences on Mondays, Wednesdays and Fridays.

#### Year 6 Class Assemblies

Our class assembly performance will be on the following days :  
3<sup>rd</sup> October 2025 Norman Foster  
10th October 2025 Renzo Piano  
17th October 2025 Zaha Hadid

All our class assemblies are at 2:45pm in the main hall.  
Parents / Carers are invited to come and support the children.



Follow us on Instagram



@LAKEFARMPARKACADEMY

# Special lunch Menu

**Special Menu**  
**Favourites Day**

**Thursday**  
**2<sup>nd</sup> October**

Sticky BBQ Chicken  
Halal Sticky BBQ Chicken  
Vegan Hot Dog with Ketchup  
Baked Wedges  
Sweetcorn & Baked Beans

**Dessert**  
Waffle  
Mixed Berry Sauce

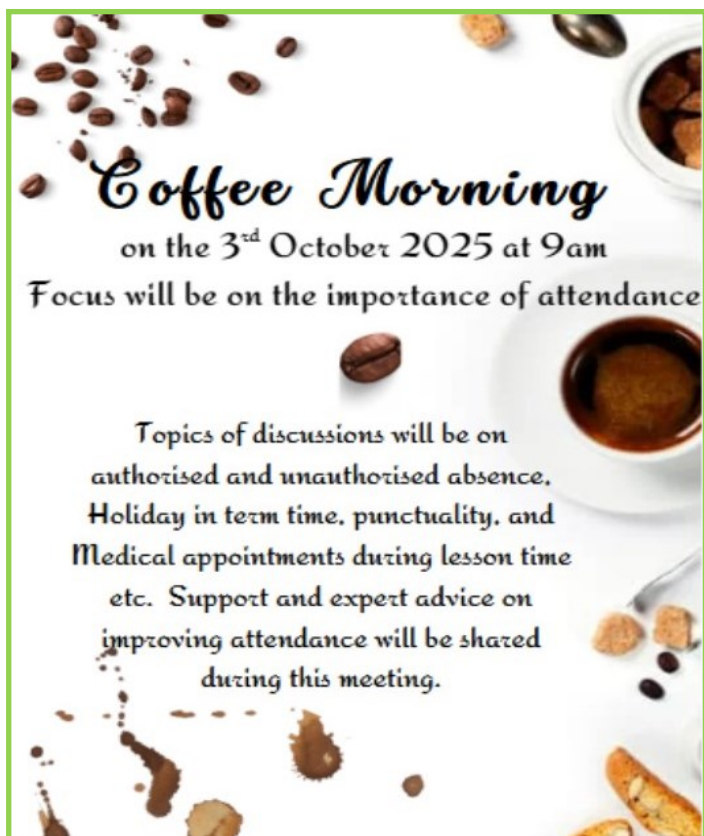
BM3Halal/Non

**pabulum**  
HONESTLY GOOD FOOD

Attending coffee morning sessions is important because it directly connects the home and school environments, creating a unified and supportive educational experience that is proven to boost a pupil's success. When parents are present at these sessions, they gain a first hand, detailed understanding of the school's curriculum, academic expectations, and assessment methods, allowing them to effectively reinforce classroom learning at home and ensure their child's efforts are aligned with school expectations.

Crucially, these sessions establish and strengthen the vital communication between teachers and families. Furthermore, attending these session and sharing vital information gathered in these session with the pupils would make them understand that education is a high priority.

This show of involvement can significantly boost the child's motivation, self-esteem, and overall engagement with school, leading to improved attendance and better behaviour. By being informed about important school procedures, policies, and resources, parents are better equipped to advocate for their child and partner with the school to address any issues proactively, thereby ensuring a smoother and more successful academic journey.



**Coffee Morning**  
on the 3<sup>rd</sup> October 2025 at 9am  
Focus will be on the importance of attendance

Topics of discussions will be on authorised and unauthorised absence, Holiday in term time, punctuality, and Medical appointments during lesson time etc. Support and expert advice on improving attendance will be shared during this meeting.

Lake Farm Park Academy  
**How to support your child in the Digital World**

Stay Safe, Stay Smart!

**Come and join us for a coffee morning on the 10<sup>th</sup> October 2025 at 9am**

Resources, websites and information for parents about online safety and parental controls will be shared.

Join us to learn how you can help! We will show you how to navigate and get the most out of Google Classroom, MyMaths, Spelling Shed, Bug Club, and Accelerated Reader quizzes so you can support your child's learning journey.

**Tips for Staying Safe Online:**

- Use strong passwords
- Think before you click
- Be kind and respectful
- Install antivirus software

Welcome to Year 4 MTC Coffee morning

Delightful MTC Coffee Morning

<https://mathsframe.co.uk/en/resources/resource/477/Multiplication-Tables-Check>



Friday 24<sup>th</sup> October 2025  
at Lake Farm Park Academy  
From 9:00-9:30

Autumn Term After school clubs

**PE CLUBS** →

Club	Multi-Skills	Multi-Skills	Basketball	Multi-Skills	Football
Year Group	Year 1- Year 6	Year 1-Year 6	Year 3- Year 6	Year 1- Year 6	Year 1- Year 6
Days	Monday	Tuesday	Wednesday	Thursday	Friday
Start Dates and Times	15/09/25 3.20pm	16/09/25 3.20pm	17/09/25 3.20pm	18/09/25 3.20pm	19/06/25 3.20pm
End Dates and Times	20/10/25 4.20pm	21/09/25 4.20pm	22/10/25 4.20pm	23/10/25 4.20pm	24/10/25 4.20pm

**BAKING** →

Year Group	Days	Start Date and Time	End Date and Time
Year 3 & Year 4	Monday	15/09/2025–3:20pm 3.20pm	20/10/25–4:45pm 4.45pm

**CODING** →

Year Group	Days	Start Date and Time	End Date and Time
Year 3-5	Thursday	18/09/25 3.20pm	23/10/25 4.30pm

**CHESS** →

Year Group	Days	Start Date & Time	End Date and Time
Year 3-6	Wednesday	17/09/25 at 3.15pm	24/10/25 at 4.30pm

**Music** →

Year Group	Days	Instruments	Start Dates and Times	End Dates and Times
Year 3 to Year 6	Monday	Keyboard	29/09/2025 3:20pm	20/10/2025 4:20pm
Year 1 & Year 2	Tuesday	String instru- ments (Guitar & Ukulele)	30/10/2025 3:20pm	21/10/2025 4:20pm
Year 1 & Year 6	Wednesday	Choir	01/10/2025	22/10/2025 4:20pm
Year 1 to Year 2	Thursday	Recorder	02/10/2025 3.20pm	23/10/2025 4.20pm
Year 1 to Year 6	Friday	Percussion	03/10/2025	24/10/2025 4:20pm

## WHOLE SCHOOL ATTENDANCE

### Top Attendance for the Week commencing 08/09/2025

	Week Commencing 08/09/2025	%	Learning hours Lost
1	Year 5: Maryam Mirzakhani	99.3%	10
2	Year 3: Charles Dickens	98.8%	20
3	Year 4: Nikola Telsa	97.7%	30
4	Year 3: Maya Angelou	96.8%	37
4	Year 6: Renzo Piano	96.6%	37
4	Year 2: Badger	96.2%	37
4	Year 4: Charles Darwin	96.2%	37
4	Reception: Ladybird Class	96.0%	37
5	Year 5: Archimedes	95.6%	47
5	Year 5: Katherine Johnson	95.0%	47
5	Year 1: Rabbit Class	95.0%	47
6	Year 2: Otter	93.8%	65
7	Reception: Butterfly Class	92.9%	75
7	Year 4: Marie Curie	92.5%	75
8	Year 1: Squirrel Class	91.9%	85
8	Year 6: Zaha Hadid	91.8%	85
8	Year 3: Cressida Cowell	91.3%	85
9	Year 1: Mole Class	89.4%	105
10	Reception: Grasshopper	88.9%	115
11	Year 6: Norman Foster	87.7%	125
12	Year 2: Fox	85.2%	

### Top Attendance for the Week commencing 15/09/2025

	Week Commencing 15/09/2025	%	Learning hours Lost
1	Year 3: Maya Angelou	98.1%	20
2	Year 1: Mole Class	97.9%	30
2	Year 2: Badger	97.2%	30
2	Year 2: Otter	97.1%	30
3	Year 4: Charles Darwin	96.9%	37
3	Year 1: Rabbit Class	96.8%	37
3	Year 3: Charles Dickens	96.7%	37
4	Year 6: Renzo Piano	95.9%	47
4	Year 5: Maryam Mirzakhani	95.7%	47
4	Year 4: Nikola Telsa	95.0%	47
5	Year 5: Archimedes	93.4%	65
5	Year 5: Katherine Johnson	93.3%	65
6	Reception: Butterfly Class	92.9%	75
6	Year 3: Cressida Cowell	92.1%	75
6	Reception: Ladybird Class	92.0%	75
7	Year 6: Norman Foster	91.5%	85
8	Year 6: Zaha Hadid	90.8%	95
8	Year 4: Marie Curie	90.4%	95
8	Year 2: Fox	90.2%	95
9	Year 1: Squirrel Class	88.9%	115
10	Reception: Grasshopper Class	87.0%	125

### Request to parents

We kindly request that all non-emergency dental and medical appointments be scheduled outside of school hours. This includes after 3:30 p.m., or during school holidays like half term.

Minimising disruption to learning is a top priority, and every lesson is valuable. By booking appointments during non-school hours, you help ensure your child doesn't miss important instruction and

## Attendance Reminders

Lake Farm Park Academy has high expectations for every student from the moment they join our school. Children have the right to a high quality education and we provide this at Lake Farm Park Academy. High attendance is necessary to ensure that your child benefits fully from the learning opportunities on offer and to ensure they leave school having developed positive lifelong habits and as well rounded individuals.

## Medical Appointments

Appointments, where possible, should be made outside of school hours or in the holiday period. This includes routine dental appointments. If this is unavoidable, your child should still attend school before or after the appointment where possible. Any session missed that was deemed reasonable to attend will be marked as unauthorised leave.

## Absence Requests

Absence requests will only be considered for exceptional circumstances and these are dealt with on an individual basis.

### What to do if your child cannot attend school:

**Absence must be reported on a daily basis.** You must contact the school (**before 9.00am**) on the first day of absence. This can be done by emailing

lfpaoffice@theparkfederation.org or by calling the school number 02085732622 option 1. Please leave the Child's name, class and the reason why they cannot attend school. If they are ill, please give a clear explanation of their condition. **For a prolonged absence due to illness, medical evidence will be requested.** This can be in the form of a prescription, medical paperwork or an appointment card/letter.



# Lake Farm Park Academy

*Learning, Achieving, Aspiring Together*

## PUNCTUALITY

How does this affect children?

If your child arrives late in school, he / she misses the teacher's instructions and the introduction to the lesson. They also disturb the learning of other students as the teacher has to acknowledge the lateness and go through the lesson with the child. Did you know how much learning children might miss out due to lateness?

Minutes late per day during school year	Equal days of teaching lost in a year
5 minutes	3.4 days
10 minutes	6.9 days
15 minutes	10.3 days
20 minutes	13.8 days
30 minutes	20.7 days

What can we do to help?

Ensure your child arrives on time. Children are able to come onto the school grounds at 8:30am or book them in the breakfast club through Get Active

Prepare for school the night before, including your book bag, lunch and uniform etc.

Punctuality is important for children to start the day well but also a good habit for life. If you need support or advice about punctuality please contact Miss. Dickerson or email

lfpaoffice@theparkfederation.org

# UNIFORM

It is our school policy that all children wear school uniform when attending school, or when participating in a school -organized event outside normal school hours.

Our policy on school uniform is based on the motion that school uniform:

- Promotes a sense of pride in the school;
- Engenders a sense of community and belonging towards the school;
- Is practical and smart;
- Identifies the children within school;
- Prevents children from coming to school in fashion clothes that could be distracting the class;
- Makes children feel equal to their peers in terms of appearance;
- Is regarded as suitable wear for school and good value for money by most parents;
- Is designed with health and safety in mind

## General Uniform

- LFPA sweatshirt/cardigan or plain purple sweatshirt/cardigan
- LFPA Blazer (optional) Year 5 & Year 6 are encouraged to wear the blazer
- White LFPA T-shirt or plain white shirt/T-shirt/polo shirt/blouse
- Purple pinafore (purple and white checked) dress
- Black or grey trouser or skirt
- Black shoes
- Black or grey tights/black, white or grey socks
- No jewellery (except for stud earrings) or nail polish
- No decorative hair accessories
- Plain black; white or purple hijabs or Patkas

## PE Kit

- White LFPA T-shirt
- LFPA purple jumper or fleece - No hoodies
- Black shorts (no designer markings)
- Black jogging bottoms in cold weather (no designer markings)
- Black trainers/plimsolls
- **No earrings** should be worn on the days children have PE

***NB. Trousers and shorts worn in school for uniform must be appropriate uniform style material and 'cut' NOT sportswear or fashion styles. PE kits are to be worn to school on the days that your child/ren have PE.***

## Lake Farm Park Academy Uniform



LAKE FARM PARK  
PE BAG

LAKE FARM PARK  
BOOK BAG



## PE KIT



JOGGING  
BOTTOMS



SHADOW STRIPE  
SHORT



TRAINERS OR  
VELCRO  
PLIMSOLL



LAKE FARM  
FLEECE



LAKE FARM PARK  
T-SHIRT

<https://pmgschoolwear.co.uk/school/lakefarmparkacademy>

## STATIONARY IN KEY STAGE 2

Transparent Pencil Case 32 cm long



HB pencil without rubber

Glue Stick



Sharpener



30cm Transparent, clear ruler